

# Daily Derivatives & Market Report

## CONTENTS

Page No.	Particulars
2	Market Summary
3	Nifty Futures – Derivatives Snap
4	Bank Nifty Futures – Derivatives Snap
5	Activity in Nifty Options
6	What do Nifty Technical suggest
7	Derivative Analysis
8	Disclaimer

## Index Trend Analysis

Pivot(Daily)	Close	S2	S1	Pivot	R1	R2	Daily	Weekly	Monthly
Nifty	10585	10509	10547	10583	10622	10658	Neutral	Neutral	Neutral
Sensex	35159	34876	35017	35152	35293	35428	Neutral	Neutral	Neutral
Nifty Futures	10620	10539	10579	10612	10652	10684	Neutral	Neutral	Neutral
Bank Nifty	25771	25507	25639	25731	25863	25955	Neutral	Neutral	Neutral
CNX IT	14553	14298	14425	14611	14739	14925	Neutral	Neutral	Buy
CNX Midcap	17606	17265	17435	17530	17700	17795	Neutral	Neutral	Neutral
CNX Small Cap	6325	6201	6263	6297	6359	6392	Neutral	Neutral	Neutral

## Market Summary

Domestic Indices	Close	Points	% Chg
SENSEX	35158.6	-79.1	-0.2
NIFTY	10585.2	-13.2	-0.1
MIDCAP	14944.2	97.4	0.7
SMLCAP	14671.9	85.1	0.6
BSEFMC	11210.4	-4.2	0.0
AUTO	20845.2	114.4	0.6
POWER	1977.6	8.6	0.4
REALTY	1762.8	-5.5	-0.3
BSE IT	14185.5	-170.7	-1.2
BANKEK	29098.3	59.2	0.2
OILGAS	13584.5	64.0	0.5
METAL	12863.1	-130.5	-1.0

Currency Futures	Close	Pre. Pts	% Chg
28-Nov-18 EUR-INR	82.59	83.59	-1.19
28-Nov-18 USD-INR	72.69	72.67	0.03
28-Nov-18 GBP-INR	94.66	95.63	-1.02
28-Nov-18 JPY-INR	63.95	64.29	-0.54

Advance/ Decline	Adv	Dec	Un Ch.
NSE	940	843	77
BSE	1321	1225	133

FII/DII Capital Mkt*	Buy	Sell	Net
FII	6395	5781	614
DII	3040	3377	(337)

\*NOTE: - FII AND DII data figure is provisional

## Market Commentary

Indian equity benchmarks ended the volatile day of trade marginally in red on Friday, as traders remained on sidelines ahead of the Index of Industrial Production (IIP) and Consumer Price Index (CPI) to be released next week. Markets started the session on pessimistic note, as traders remained concerned about Moody's Investors Service's statement that Indian economy will expand 7.4% in 2018, but the growth will slow down to 7.3% in the next year as domestic demand tapers on higher borrowing cost due to rising interest rates. It said the greatest downside risk to India's growth prospects stem from concerns about its financial sector. Market participants also remained cautious with a private report stating that unemployment rate in the country rose to 6.9% in October - the highest in two years. The estimated number of people employed during October 2018 was 397 million. This was 2.4% lower than the rate in October 2017. Meanwhile, the finance ministry said that GST refund of Rs 82,775 crore to exporters has been cleared as on October 31, which is 93.8% of the total such claims with the tax authorities. The ministry said Rs 5,400 crore worth GST refund is still pending with the government and that is being expeditiously processed.

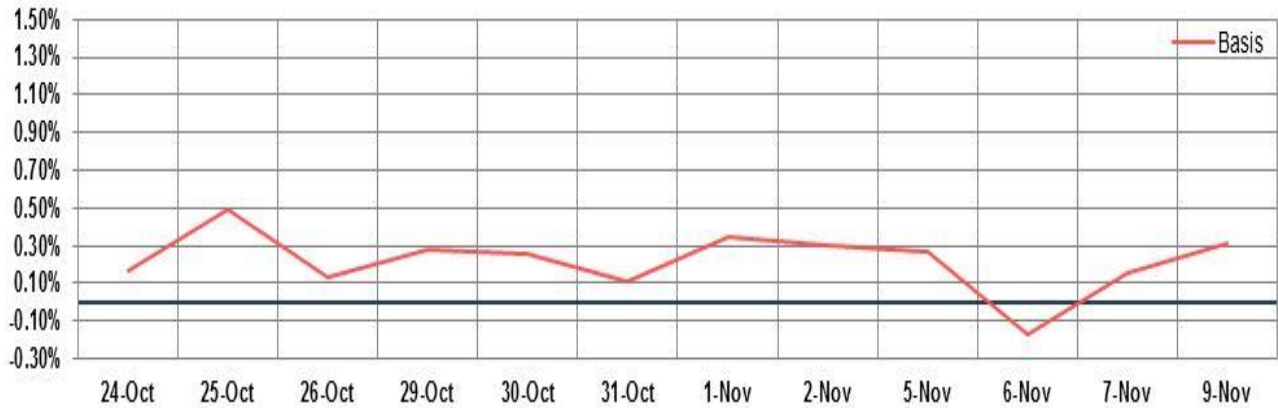
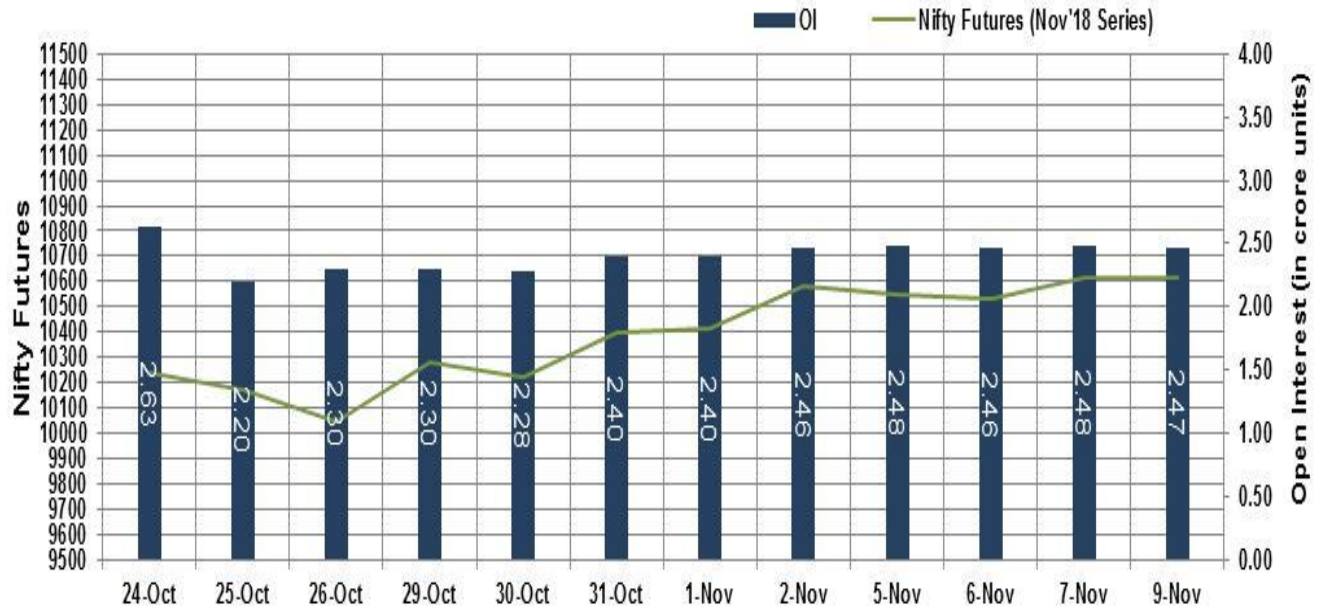
However, markets pared all of their losses and turned green in noon deals, as traders took some support from Finance Minister Arun Jaitley's statement that demonetisation helped in tackling black money and expanding the tax base.

## Market Turnover & FII Derivative Data

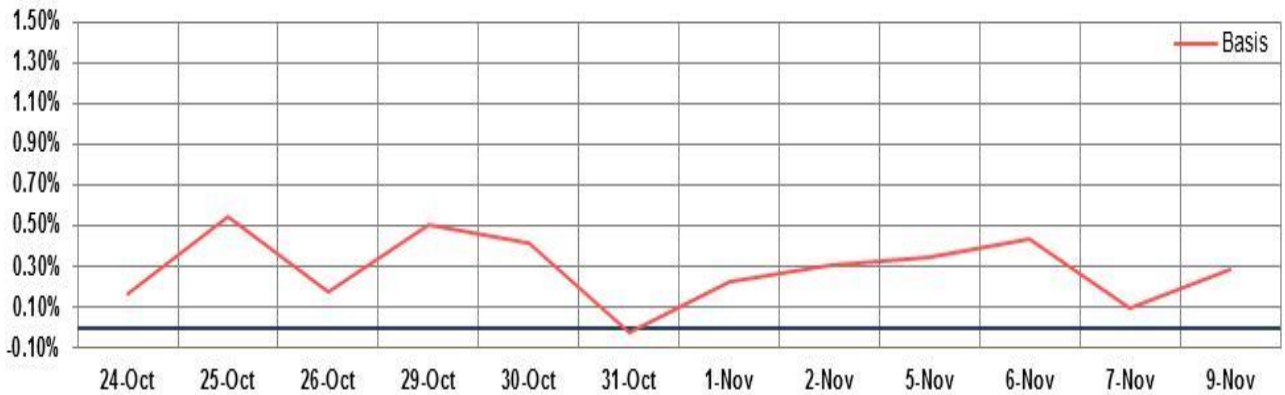
Market TO	Current	Previous	Net%
BSE CASH	2425	2474	(2)
NSE CASH	29572	27435	8
NSE FO	415478	1433763	(71)

FII Derivatives	Buy	Sell	Net
Ind. Futures	3077	2429	647
Ind. Options	51501	52277	(776)
Stk. Futures	10784	10647	137
Stk. Options	5667	5662	5

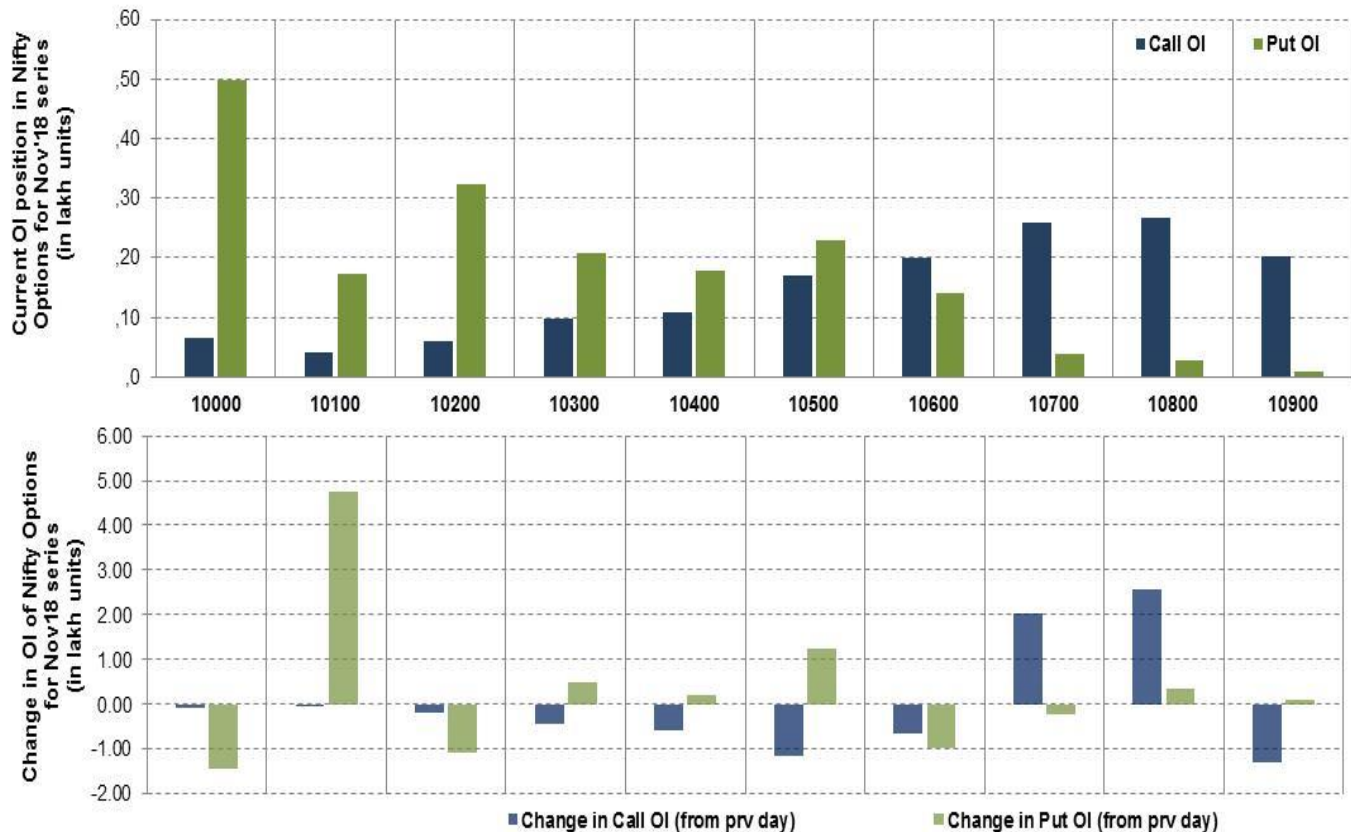
# Nifty Futures



## Bank Nifty Futures



## Nifty Options



Note – Change in OI of Nifty Options refers to change from previous trading day  
 Source-NSE, SIHL Derivatives Research (Institutional Equities)

- Among Nifty calls 10,800 SP from the Nov month expiry was the most active call with an addition of 0.25 million in open interest.
- Among Nifty puts, 10,000 SP from the Nov month expiry was the most active put with a reduction of 0.14 million open interests.
- The maximum OI outstanding for Calls was at 10,800 SP (2.68mn) and that for Puts was at 10,000 SP (4.99mn)

## Nifty Technical & Indices Levels

1-Nifty 50 - 09/11/18

Avg Avg



Nifty Cash prices have settled at 10585.20 marginal down by 0.12 percent from the previous close. On the upper side it has resistance of 10650 and 10700 levels, while lower side it has support of 10500 and 10450 levels. Intraday traders should be cautious and take position accordingly.



Fresh Longs ↑ Open Interest ↑ Price					
Script	Prev. OI	Cur. OI	% Chg. OI	LTP	Price % Chg
PCJEWELLER	6,963,000	8,812,500	26.56	92.35	10.27
ORIENTBANK	9,546,000	10,812,000	13.26	87.85	6.81
SRF	556,500	620,500	11.50	2093.00	4.25
MARICO	7,417,800	8,062,600	8.69	340.40	0.59
Short-Covering ↓ Open Interest ↑ Price					
Script	Prev. OI	Cur. OI	% Chg. OI	LTP	Price % Chg
MFSL	2,336,400	2,206,800	-5.55	407.20	3.21
DABUR	17,306,250	16,187,500	-6.46	377.55	2.33
JUSTDIAL	2,958,200	2,765,000	-6.53	511.25	3.48
MINDTREE	3,703,200	3,342,600	-9.74	855.15	2.08
Fresh Shorts ↑ Open Interest ↓ Price					
Script	Prev. OI	Cur. OI	% Chg. OI	LTP	Price % Chg
INDIANB	4,066,000	5,896,000	45.01	229.55	-12.59
BALKRISIND	2,501,600	2,910,400	16.34	935.20	-0.49
ASHOKLEY	42,192,000	45,400,000	7.60	118.80	-2.66
NMDC	18,528,000	19,440,000	4.92	110.15	-1.43
Long Unwinding ↓ Open Interest ↓ Price					
Script	Prev. OI	Cur. OI	% Chg. OI	LTP	Price % Chg
SBIN	84,438,000	83,172,000	-1.50	283.70	-1.17
TITAN	14,204,250	13,982,250	-1.56	848.15	-0.04
OFSS	224,400	215,100	-4.14	3565.60	-0.06
MRPL	4,545,000	4,347,000	-4.36	83.15	-0.06

#### Disclaimer:

The Information provided by SMS or in newsletter or in any document has been prepared by Shah Investor's Home Ltd (SIHL). The Information provided by SMS or in newsletter does not constitute an offer or solicitation for the purchase or sale of any financial instrument or as an official confirmation of any transaction. The information contained herein is from publicly available data or other sources believed to be reliable, but we do not represent that it is accurate or complete and it should not be relied on as such. SIHL or any of its affiliates/ group companies shall not be in any way responsible for any loss or damage that may arise to any person from any inadvertent error in the information contained in this report or SMS. This Information provided by SMS, reports or in newsletter is provided for assistance only and is not intended to be and must not alone be taken as the basis for an investment decision. The user assumes the entire risk of any use made of this information. Each recipient of this Information provided by SMS, report or in newsletter should make such investigation as it deems necessary to arrive at an independent evaluation of an investment in the securities of companies referred to in this information provided by SMS, report or in newsletter (including the merits and risks involved), and should consult his own advisors to determine the merits and risks of such investment. The investment discussed or views expressed may not be suitable for all investors. This information is strictly confidential and is being furnished to you solely for your information.

The information should not be reproduced or redistributed or passed on directly or indirectly in any form to any other person or published, copied, in whole or in part, for any purpose. The information provided by report or SMS is not directed or intended for distribution to, or use by, any person or entity who is a citizen or resident of or located in any locality, state, country or other jurisdiction, where such distribution, publication, availability or use would be contrary to law, regulation or which would subject SIHL and affiliates/ group companies to any registration or licensing requirements within such jurisdiction. The distribution of this Information provided by SMS or in newsletter in certain jurisdictions may be restricted by law, and persons in whose possession this Information provided by SMS or in newsletter comes, should inform themselves about and observe, any such restrictions. The information given or Information provided by SMS, report or in newsletter is as of the date of the issue date of report or the date on which SMS provided and there can be no assurance that future results or events will be consistent with this information. This information is subject to change without any prior notice. SIHL reserves the right to make modifications and alterations to this statement as may be required from time to time. However, SIHL is under no obligation to update or keep the information current.

Nevertheless, SIHL is committed to providing independent and transparent recommendation to its client and would be happy to provide any information in response to specific client queries. Neither SIHL nor any of its affiliates, group companies, directors, employees, agents or representatives shall be liable for any damages whether direct, indirect, special or consequential including lost revenue or lost profits that may arise from or in connection with the use of the information. Past performance is not necessarily a guide to future performance. The disclosures of interest statements incorporated in the Information provided by SMS, report or in newsletter are provided solely to enhance the transparency and should not be treated as endorsement of the views expressed in the report. The analyst for this report certifies that all of the views expressed in this report accurately reflect his or her personal views about the subject company or companies and its or their securities, and no part of his or her compensation was, is or will be, directly or indirectly related to specific recommendations or views expressed in this report.

#### About Us:

Shah Investor's Home Ltd (SIHL) is an ISO 9001:2008 Certified financial Services Company established in 1994 at Ahmadabad, Gujarat. Customer satisfaction is guaranteed through our diversified product portfolio, professional management and customer first attitude. SIHL was the first broking house in Gujarat with membership in National Securities Depository Ltd (NSDL) and was the first broking name providing services in NSE F&O in Ahmedabad. Today, SIHL ranks among the top most players in Gujarat in retail stock broking area with 45 branches, 350 franchisee across India and providing service to more than 1,25,000 clients.